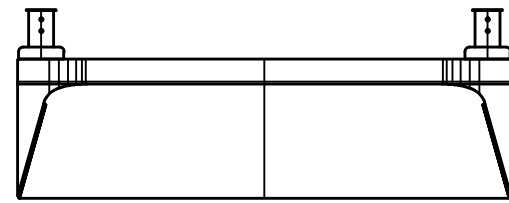


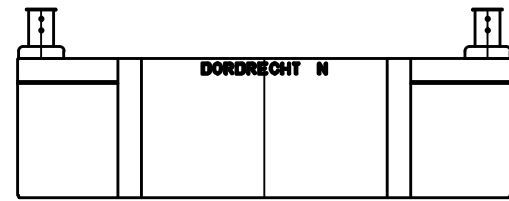
GENERAL ARRANGEMENT

FOR INFORMATION ONLY

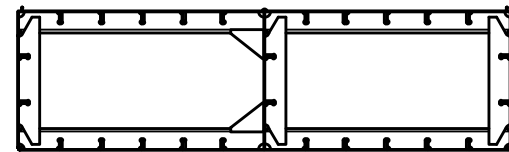
BOW VIEW



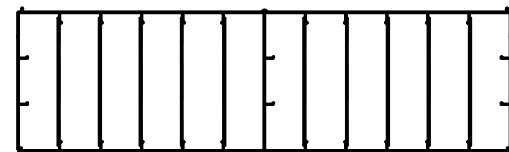
STERN VIEW



WEB FRAME



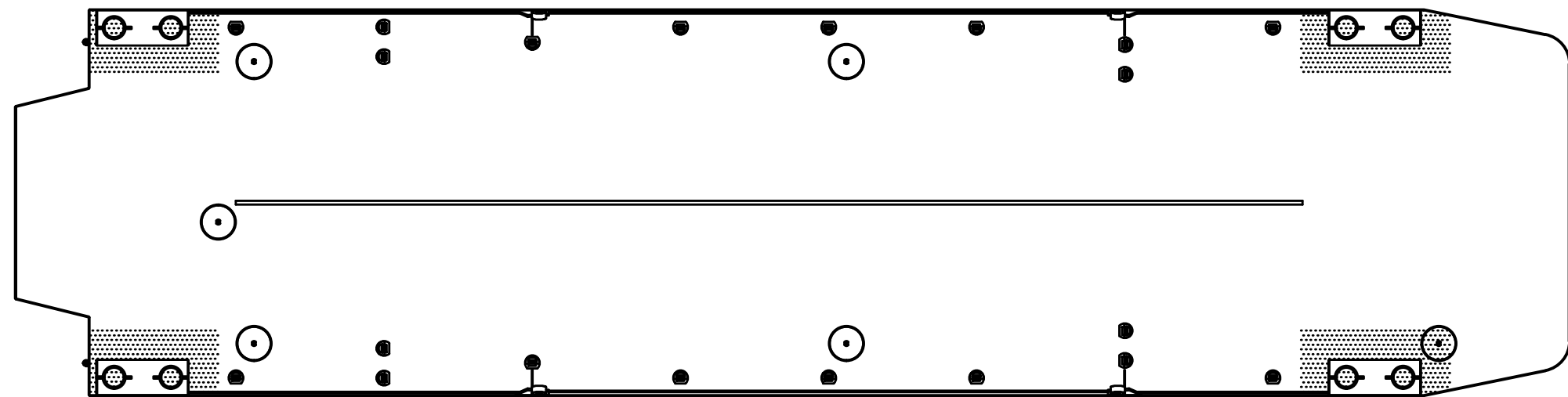
BULKHEAD



SIDE VIEW



TOP VIEW



GENERAL PARTICULARS 256-2

Type Test pontoon
 Class I/W
 Imo no n/a
 Port of registry Dordrecht
 Flag Netherlands
 Length oa 26.24 m
 Width oa 6.52 m
 Depth mld 1.82 m
 Draft max. inland 1.64 m
 Deck capacity n/a t/m²
 Lightweight 63.67 t
 Deadweight 205 t

NO.	REMARKS	DRAWN	DATE
E	-	-	-
D	LAYOUT	JV	19-05-2015
C	KICK-RAIL	JV	20-01-2012
B	DECK-LAYOUT CHANGED	JV	19-07-2011
A	LWT changed	JV	09-11-2010
O	FIRST ISSUE	JV	14-07-2010

Approved: _____ Date: _____
 Approved: _____ Date: _____

NOTE: Particulars of unit believed to be correct but not guaranteed and are subject to change

Muller Zwaar Transport BV

Merwekade 82-83, 3311TH Dordrecht
 PObox 400, 3300AK Dordrecht
 Phone: +31 (0)78 639 2000
 Fax: +31 (0)78 639 2019
 E-mail: engineering@muller-dordrecht.nl



PONTOON 256-2 GENERAL ARRANGEMENT

Principal **MULLER ZWAAR TRANSPORT**
 DORDRECHT - THE NETHERLANDS

Project **256-2** Sheet **1**

Dwg. **11.001** Nr. of Sh. **1**

Projection Scale **1 : 100** Size **A3**
 Drawn **JV**
 Date **14-07-2010**

NOTICE : This drawing and the information it contains are the property of Muller Zwaar Transport BV and may not be reproduced or used in part or in whole for any purpose except by written permission of this company.