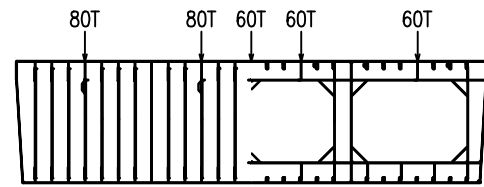
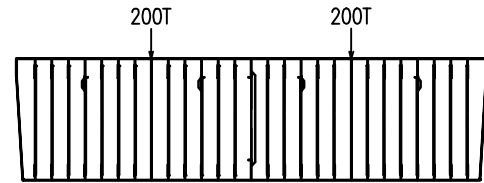


# DECK LOAD PLAN

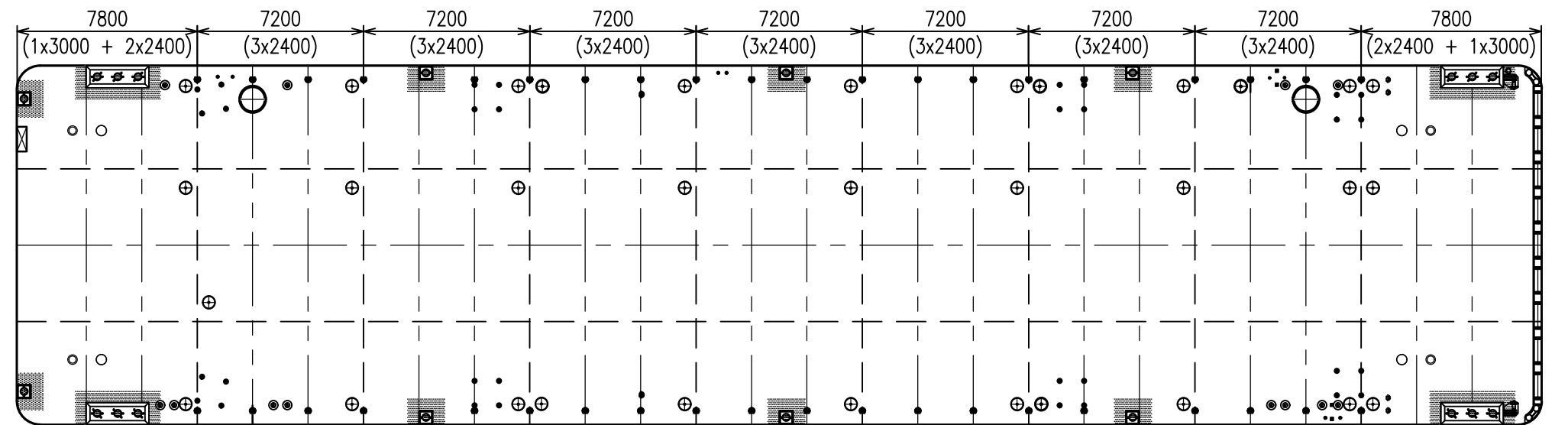
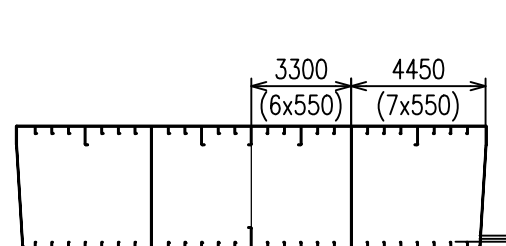
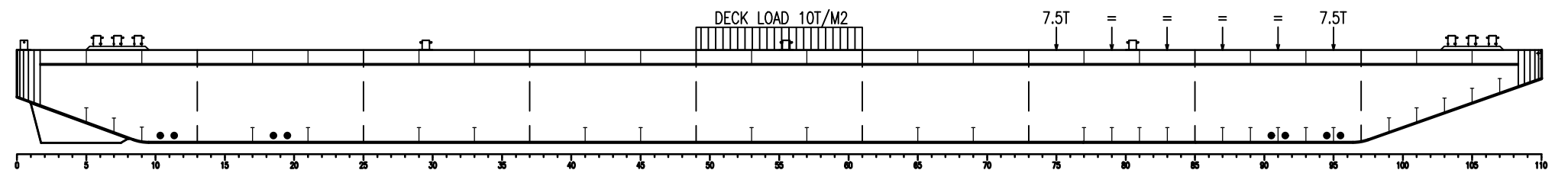
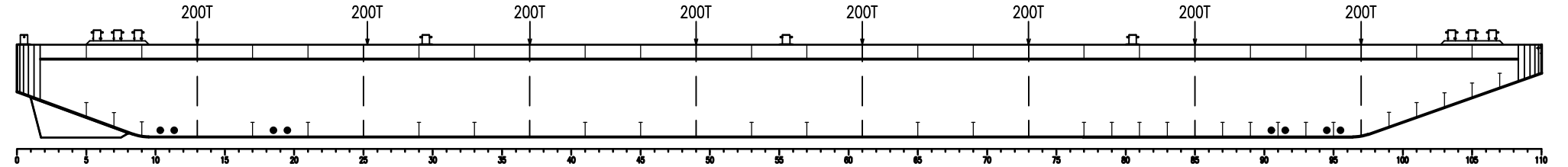
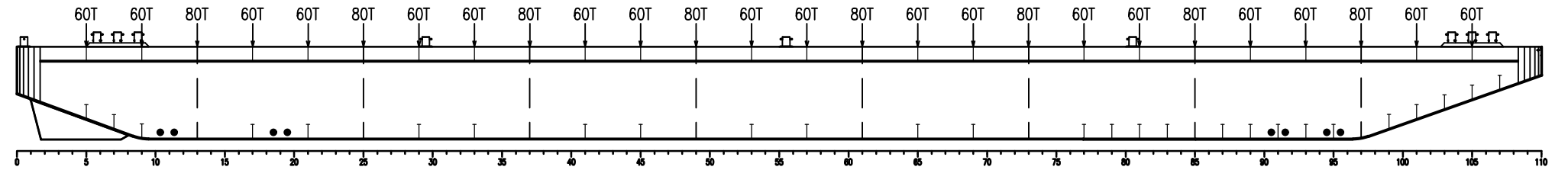
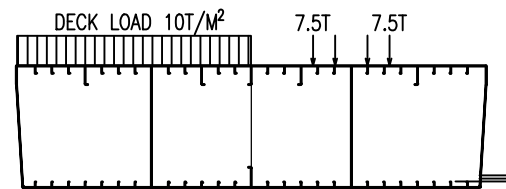
POINT LOAD OF 60T AT WEBFRAME 500x500mm  
OF 80T AT BULKHEAD 1000x500mm



POINT LOAD OF 200T AT  
CROSSPOINT OF BULKHEAD 1000x1000mm



WHEEL LOAD OF 7.5T  
AXLE LOAD OF 30T  
DISTANCE OF AXLE 1500mm



## GENERAL PARTICULARS 6615-1

Type Seagoing Ro-Ro pontoon  
 Class Lloyds Register  
 Imo no 9475002  
 Port of registry Dordrecht  
 Flag Netherlands  
 Length oa 66.04 m  
 Width oa 15.50 m  
 Depth mld 4.00 m  
 Draft max at sea (baseline) 3.13 m  
 Deck capacity 10.00 t/m<sup>2</sup>  
 Lightweight 559 t  
 Deadweight 2427 t  
 Net tonnage 309 t  
 Gross tonnage 1033 t

NOTE: Particulars of unit believed to be correct but not guaranteed and are subject to change

E	-	-	-
D	-	-	-
C	-	-	-
B	-	-	-
A	DWT correction	JV	19-09-2017
0	FIRST ISSUE	JV	08-06-2015
NO.	REMARKS	DRAWN	DATE
Approved:		Date:	
Approved:		Date:	

Muller Zwaar Transport BV

Merwekade 82-83, 3311TH Dordrecht  
 PObox 400, 3300AK Dordrecht  
 Phone: +31 (0)78 639 2000  
 Fax: +31 (0)78 639 2019  
 E-mail: engineering@muller-dordrecht.nl



PONTOON 6615-1  
DECK LOAD PLAN

Principal **MULLER ZWAAR TRANSPORT**  
DORDRECHT - THE NETHERLANDS

Project **6615-1** Sheet **1**

Dwg. **14.001** Nr. of Sh. **1**

Projection Scale **1 : 250** Size **A3**  
 Drawn **JV**  
 Date **08-06-2015**

NOTICE : This drawing and the information it contains are the property of Muller Zwaar Transport BV and may not be reproduced or used in part or in whole for any purpose except by written permission of this company.